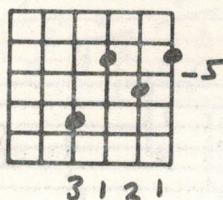


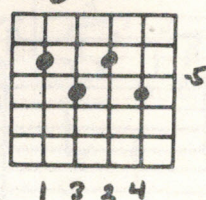
The next thing that usually gets added to fingerpicking arrangements is a moving bass line. This can be a line built around a bass run connecting two chords, or can be a separate theme or counter-melody. Julie Sakahara's playing of "When You And I Were Young, Maggie" illustrates a moving bass line built around bass runs. Watch how the bass moves from C through Am to connect to the root of the F chord in the third measure. The arrangement is played in C major without a capo.

WHEN YOU & I WERE YOUNG, MAGGIE

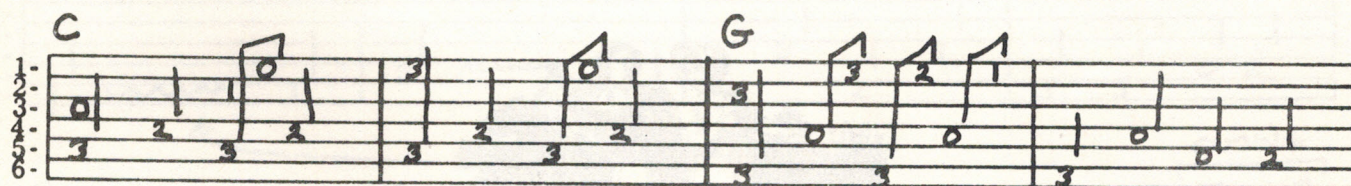
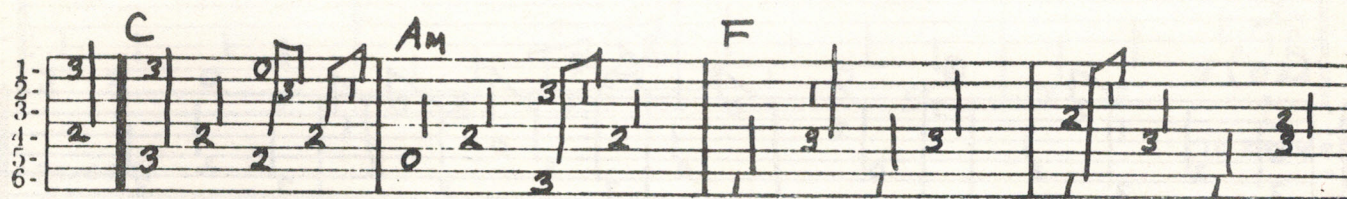
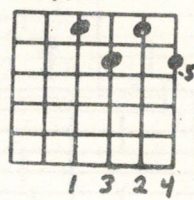
① F



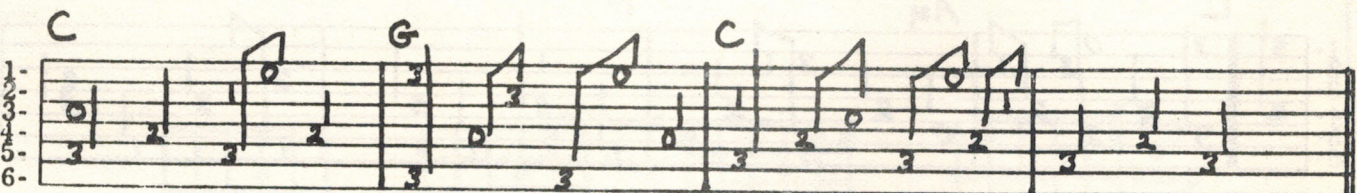
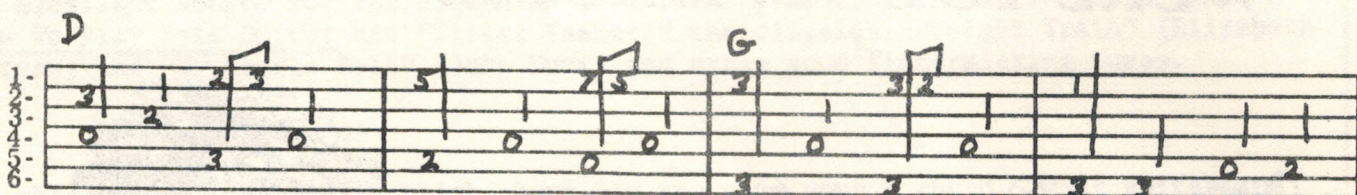
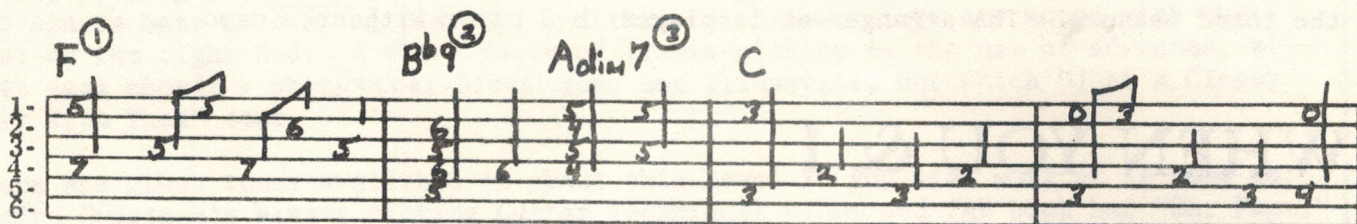
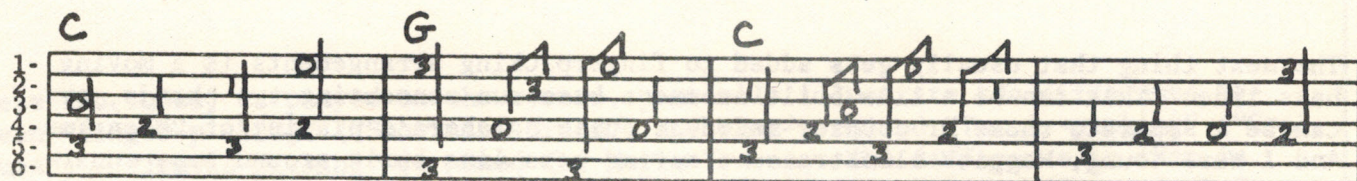
② B^b9



③ A^dm 7



By McHugh/Frost Arrangement Julie Sakahara
Copyright © 1977 Kicking Mule Publishing Inc.



Another illustration of a tune using moving bass parts and bass runs is Eric Schoenberg's "Fishing Blues". The TAB for this tune can be found later in this book.

Flip Breskin's "Mickey Mouse Club Theme Song" arrangement also uses this type of moving bass. Although we can't print the full arrangement because of copyright restrictions, here is the bass line.